

**Read** the spelling words and sentences.

1. vanity	<i>vanity</i>
2. humanity	<i>humanity</i>
3. sickness	<i>sickness</i>
4. amusement	<i>amusement</i>
5. detective	<i>detective</i>
6. loyalty	<i>loyalty</i>
7. majority	<i>majority</i>
8. gentleness	<i>gentleness</i>
9. argument	<i>argument</i>
10. humidity	<i>humidity</i>
11. ability	<i>ability</i>
12. blindness	<i>blindness</i>
13. activity	<i>activity</i>
14. relative	<i>relative</i>
15. employment	<i>employment</i>
16. specialty	<i>specialty</i>
17. creativity	<i>creativity</i>
18. arrangement	<i>arrangement</i>
19. swiftness	<i>swiftness</i>
20. tardiness	<i>tardiness</i>

The actress displays **vanity**.  
 A doctor can help **humanity**.  
 The baby's **sickness** lasted a week.  
 A playground provides **amusement**.  
 A **detective** looks for evidence.  
 Her **loyalty** is to her family.  
 The **majority** of us wanted a party.  
 She admires the doe's **gentleness**.  
 The **argument** is about politics.  
 This **humidity** curls my hair.  
 Tim's singing **ability** is exceptional.  
 Saul's **blindness** began at birth.  
 An art **activity** would be fun.  
 I have a **relative** who is famous.  
 Rosa needs summer **employment**.  
 Angel food cake is Ali's **specialty**.  
 With **creativity**, we can improve it.  
 The flower **arrangement** goes here.  
 The cheetah is known for **swiftness**.  
 This note will explain my **tardiness**.

**Think & Sort** the spelling words.1-2. Write the words that end with the suffix **-ty**.3-9. Write the words that end with the suffix **-ity**.10-14. Write the words that end with the suffix **-ness**.15-18. Write the words that end with the suffix **-ment**.19-20. Write the words that end with the suffix **-ive**.**Remember**

The suffixes **-ty**, **-ity**, **-ness**, **-ment**, and **-ive** can be added to base or root words to form new words. These new words are usually nouns.



## Word Structure

Write the spelling word that goes with each base word.

- |           |            |
|-----------|------------|
| 1. human  | 4. amuse   |
| 2. relate | 5. sick    |
| 3. detect | 6. special |

## Word Meanings

Write the spelling word that matches each clue.

7. state of being active
8. action or process of being arranged
9. action or process of being employed
10. quality of being gentle
11. state of being blind
12. quality of being creative
13. state of being tardy
14. state of being vain
15. quality of being able



Use the  
Thesaurus

Write the spelling word that is an antonym for each word. To check your answers, look up each spelling word (or base word) in your **Writing Thesaurus**.

- |                   |              |
|-------------------|--------------|
| 16. agreement     | 19. minority |
| 17. dryness       | 20. slowness |
| 18. faithlessness |              |

## Word Structure

1.

2.

3.

4.

5.

6.

## Word Meanings

7.

8.

9.

10.

11.

12.

13.

14.

15.

## Use the Thesaurus

16.

17.

18.

19.

20.



## Connections to READING

vanity	humanity	sickness	amusement	detective
loyalty	majority	gentleness	argument	humidity
ability	blindness	activity	relative	employment
specialty	creativity	arrangement	swiftness	tardiness

## Complete the Analogies

1.

2.

3.

4.

## Make Inferences

5.

6.

7.

8.

9.

10.

## Use Context Clues

11.

12.

13.

14.

15.

16.

17.

18.

19.

20.

## Complete the Analogies

Write the spelling word that completes each analogy.

1. **Local** is to **locality** as **humid** is to \_\_\_\_.2. **Sad** is to **sadness** as **tardy** is to \_\_\_\_.3. **Thread** is to **tailor** as **clue** is to \_\_\_\_.4. **Ill** is to **illness** as **amuse** is to \_\_\_\_.

## Make Inferences

Write the spelling word that best completes each sentence.

5. That is a beautiful \_\_\_\_ of flowers.

6. In spite of his \_\_\_\_, he traveled everywhere.

7. The dictionary will settle this \_\_\_\_ about words!

8. Jess has a \_\_\_\_ who lives in India.

9. Her \_\_\_\_ spoiled the effect of her beauty.

10. This artist's \_\_\_\_ is portraits of children.



## Use Context Clues

Write the spelling words that complete the paragraph.

A childhood 11. left Helen Keller blind and deaf. Her teacher, Anne Sullivan, broke through the child's anger with patience and 12.. Sullivan's 13. always kept her at Helen's side. Sullivan used imagination and 14. to teach Helen, and the child began to show great 15. in school. She mastered her subjects with amazing 16.. As an adult, Helen Keller found 17. as an author and lecturer. Her life was filled with joy and 18.. Helen Keller overcame more hardships than the 19. of people. She became an inspiration to all 20..



## Proofread a Magazine Article

Proofread the magazine article below for ten misspelled words. Then rewrite the article. Write the spelling words correctly and make the corrections indicated by the proofreading marks.

The guatemalan jungle has high humiditty, but it bubbles with animal activity. Monkeys have athletic abilty far beyond olympic acrobats. Their antics would be a source of amusment to all humanety. Birds fly with the swiftness of arrows. The creatures of this ~~jungle~~ ~~World~~ show much gentleness. ~~Soon~~ I will travel to this jungle with a relative. Our arrangement is that we will stay for two weeks and ~~to~~ spend the majorety of our time hiking and watching the animals. I can't wait!

### Proofreading Marks

- ≡ Make Uppercase
- / Make Lowercase
- ^ Add
- ~ Delete
- ◉ Add a Period
- ≡ Indent

## Informative/Explanatory Writing

### Write a Magazine Article

Write or type a magazine article about a place you've seen. Try to make the setting come alive. Choose action verbs and vivid adjectives. Make comparisons that use similes or metaphors. Use as many spelling words as possible.

- Use the writing process: prewrite, draft, revise, edit, and publish.
- Use descriptive language to convey your thoughts and feelings about the place.
- Use complete sentences with correct capitalization, punctuation, grammar, and spelling.
- If you type your article, run the spell-check feature in your word processing program to see if you spelled the words correctly. Be careful, though. An incorrect spelling may match the spelling of another word, and the spell checker can't tell the difference.

### Transfer

Think of five more words with the suffix **-ment** or **-ity**. Write the words in your Spelling Journal.



# Extend & Transfer

## Word Study



### Use Suffixes

1.

2.

3.

4.

5.

6.

7.

8.

9.

10.

11.

12.

### Word Clues

13.

14.

15.

16.

boldness	argument	gentleness	arrangement	document
fitness	ability	humidity	opportunity	employment
mobility	activity	blindness	promptness	development
sadness	relative	creativity	agreement	replacement
treatment	specialty	swiftness	refreshment	
vanity	humanity	tardiness	usefulness	
sickness	loyalty	maturity	assignment	
detective	majority	authority	amusement	

### Use Suffixes

Add a suffix meaning "state or quality" to each word below to make a spelling word.

1. human

5. blind

9. prompt

2. creative

6. sick

10. mature

3. employ

7. loyal

11. amuse

4. argue

8. agree

12. mobile

### Word Clues

Write the spelling word that fits each clue. Use your **Spelling Dictionary** to check your answers.

13. from the Latin root **vānus**, meaning "empty"

14. from the Latin word **tardus**, meaning "slow"

15. from the Latin word **specialis**, meaning "individual or particular"

16. from the Latin word **actus**, meaning "a moving about"



## Technology



# Word Hunt

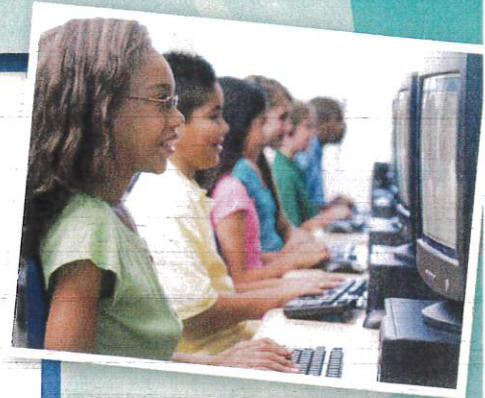
Read the article below and look for words with the suffixes **-ity**, **-ment**, and **-ive**.

There are billions of websites on the Internet. Some are good sources of information. They have many facts and figures. Other websites give only opinions. When you look at a website, be a good detective and decide whether it is informative or only for enjoyment. Here are a few questions to help you make a good judgment about a website's usefulness.

- Is the site written by an authority? Is the person an expert on the subject?
- Is the site objective? Is it based on information, not on feelings?
- Is the site subjective? Is it based on personal feelings or opinions?
- Is the site up-to-date? Does it contain the latest information or only old information?
- Is the information written with clarity? Does the author express ideas clearly?

There are several sources that are good places to begin. Look for sites by university professors who are specialists. Many government sites are excellent.

Explore with thoughtfulness. You will find astonishing sites and information.



1.

2.

3.

4.

5.

6.

7.

8.

9.

10.

## WORD SORT

1–3. Write the words with the suffix **-ment**. Circle the word that has a change in the spelling of the base word when the suffix is added.

4–6. Write the words with the suffix **-ity**.

7–10. Write the words with the suffix **-ive**. Circle the two words that are often confused.